



DIRECT MOVES



Stavordale Road , Weymouth DT4 0AF

- Two bedroom ground floor apartment
 - Generous communal facilities
 - Short stroll to Weymouth town centre
- Service Charge £3,460 & Ground Rent £360.00
- Lift access to all floors
- Popular Over 55's development
- No onward chain

£90,000 Leasehold





Entrance Hall

A well proportioned entrance hallway, a door opens into an airing cupboard and another door opens into a large storage cupboard. Doors open into all rooms.

Lounge

16'8" x 10'2"

A spacious rear aspect room with French doors opening onto the communal gardens.

Kitchen

6'10" x 6'2"

An internal room with a range of eye an base level units, stainless sink with draining board and stainless taps, space for white goods and space for oven.

Bathroom

6'2" x 4'7"

An internal shower room with a walk in shower, a low level W/C and a hand wash basin with stainless tap.



Bedroom One

15'5" x 8'2"

A well size double bedroom with a rear aspect double glazed window looking onto the communal grounds.

Bedroom Two

15'5" x 8'2"

Another spacious double bedroom with a rear aspect double glazed window looking onto the communal grounds.

Disclaimer

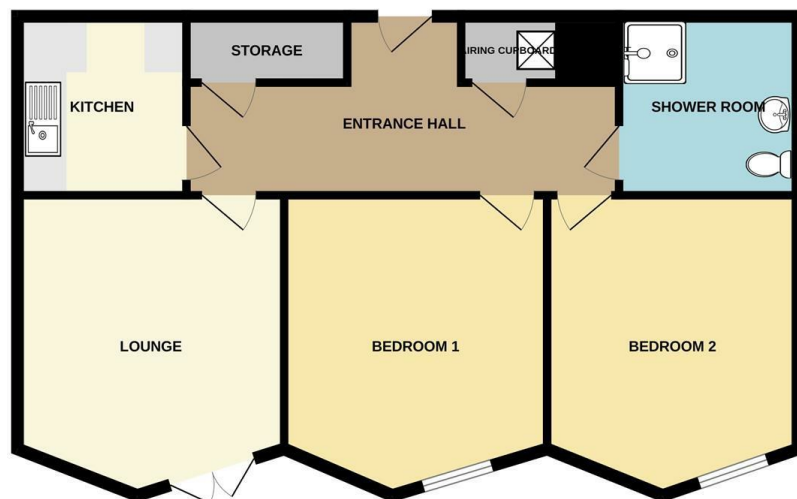
Direct Moves Estate Agents make no representations or warranties regarding the accuracy, completeness, or reliability of the property details provided. These details are for informational purposes only and should not be relied upon in any way. The information is not intended to form part of any contract and does not constitute an offer or guarantee by Direct Moves.

Should you wish to proceed with an offer on this property, we are obligated by HMRC to conduct mandatory Anti-Money Laundering Checks. We outsource these checks to our compliance partners at Coadjute and they charge a fee for this service.



Local Authority
Council Tax Band **B**
EPC Rating **C**

GROUND FLOOR



Whilst every attempt has been made to ensure the accuracy of the floorplan contained here, measurements of doors, windows, rooms and any other items are approximate and no responsibility is taken for any error, omission or mis-statement. This plan is for illustrative purposes only and should be used as such by any prospective purchaser. The services, systems and appliances shown have not been tested and no guarantee as to their operability or efficiency can be given.
Made with Metropix ©2026

Direct Moves Estate Agents Office

9 Westham Road
Dorset
Weymouth
DT4 8NP

Contact

01305 778500
sales@directmoves.com
<https://directmoves.com/>

Agents Note: Whilst every care has been taken to prepare these particulars, they are for guidance purposes only. All measurements are approximate and for general guidance purposes only and whilst every care has been taken to ensure accuracy, they should not be relied upon and potential buyers/tenants are advised to recheck the measurements.